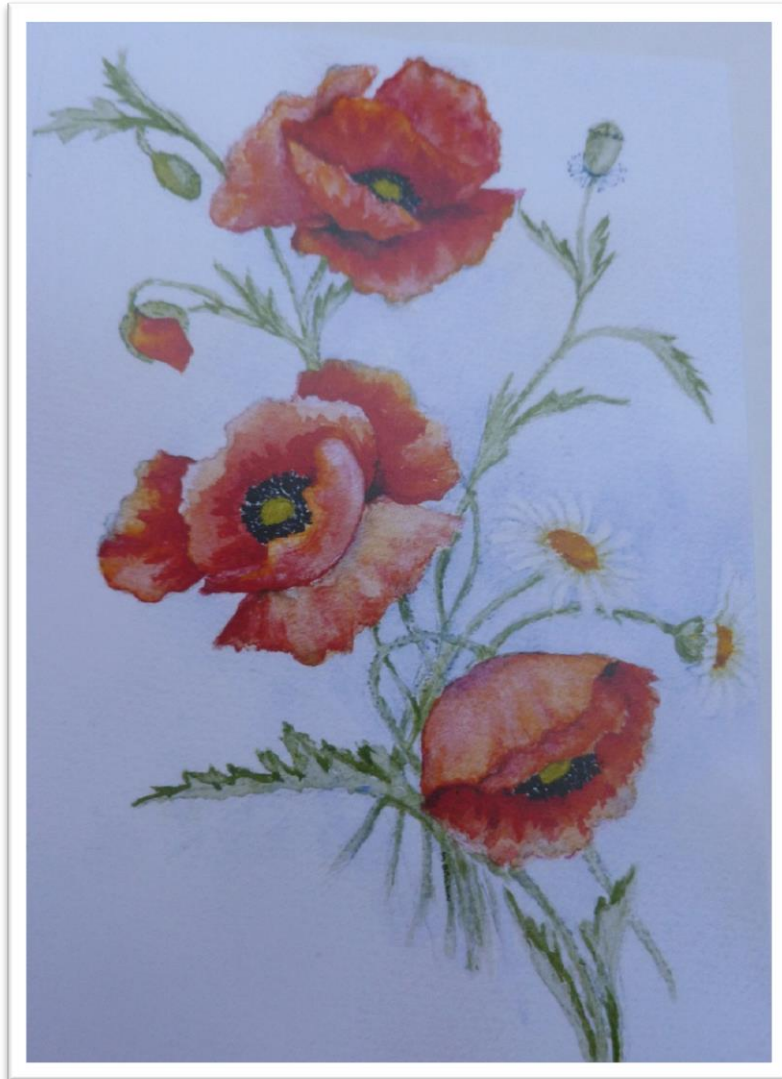


THE PARISH OF BOWDEN & MELROSE



**SEPTEMBER, OCTOBER, NOVEMBER
2016**

BOWDEN & MELROSE CHURCH OF SCOTLAND

Church Office

Weirhill, St Mary's Road

MelroseTD6 9LJ

Tel: 01896 823339

Email bowden.melrosepc@btinternet.com

Website www.bowdenandmelroseparish.org

Scottish Charity No SCO 06480

INTERIM MODERATOR	VERY REV. DAVID ARNOTT adka53@btinternet.com	01721 725979
LOCUM MINISTER	REV. BRUCE MCNICOL mcnicol942@gmail.com	01835 862991
SESSION CLERK	A. L. RINTOUL Kirklea, Ashkirk, Selkirk	01750 32289
TREASURER TREASURER FOR F.W.O./GIFT AID	G. S. CHISHOLM	OFFICE 823339
CONVENER FOR F.W.O./GIFT AID	I. E. PURVES Avenel, Gattonside, Melrose	822316
FABRIC CONVENER	C. ARMSTRONG 49, Brunton Park, Bowden, Melrose	01835 823591
CHURCH SECRETARY/ ROLLKEEPER/ GIFT AID SECRETARY	H. CHISHOLM	OFFICE 823339
ORGANIST & CHOIRMASTER	J. MARSHALL 24 Tower Street, Selkirk	01750 21563
ASSISTANT ORGANIST & CHOIRMASTER	J. G. A. LETHAM 16 Abbotsferry Road, Tweedbank	756554
CHURCH OFFICER	Y. YOUNG Tweedsyde, Tweedmount Road Melrose	822774

Bowden and Melrose Parish Church

19th August, 2016.

Dear Friends,

Presentation to Jim Marshall

It was on 16th October 1966 that the Kirk Session appointed Jim Marshall as organist and choirmaster. The congregation has been very privileged to have had an organist of Jim's ability and talent for 50 years to accompany the praise and church goes eagerly await his closing voluntaries each Sunday.

In appreciation of Jim's outstanding service to the congregation as organist and choirmaster the Kirk Session has agreed that a presentation will be made to him and contributions to a Presentation Fund are invited. Cash and cheque contributions should be placed in sealed envelopes addressed to the Session Clerk and handed to me or posted or handed in to the Church Office. Contributions in suitably marked envelopes can also be placed in the offering bags on any Sunday. Cheques should be payable to Bowden and Melrose Parish Church. The closing date for contributions is Sunday 25th September. Strict confidentiality will be observed.

The presentation will be made at a mid-week Wine and Savouries Reception in the Church Hall on Tuesday, 4th October at 7.30p.m. It would be helpful if the undernoted slip could be completed and returned to the Church Office.

Yours sincerely,



Ewan Rintoul
Session Clerk.

JIM MARSHALL PRESENTATION

1. A contribution to the Presentation Fund is enclosed
2. The following will be attending the Reception on 4th October at 7.30p.m.

.....

August, 2016

Dear Friends,

There is a comfort in routine. The long days of summer are slowly shortening. Kirk life and its attendant activities start to kick into action again and the familiar timetable returns to normal.

It is important we maintain a good routine during the vacancy. The Family Services for example will resume again at the end of August, and as before on a monthly basis, though perhaps not always on the same Sunday of the month. It is a known fact that the sign of a healthy congregation is one where the absence of a minister does not affect its on-going life and vitality. I have to say how impressed I am by the hive of activity within the congregation, but also the involvement of members in the wider community. That is a great encouragement, and a big plus point for any who are interested in this vacant charge.

I was delighted to be asked to open the church fete at Bowden in August and even more delighted by the packed hall as the afternoon wore on, amid the groaning tables of produce. They all speak of a congregation well integrated into the community and prepared to work hard to maintain its place there.

Your Nominating Committee continues its search for your next minister but it does ask you to understand that its work is confidential.

Bruce McNicol, the locum, will be off on a well-deserved holiday for the month of September.

Yours sincerely,

David Arnott

Interim Moderator

An Invitation to Holy Communion

Last Sunday in September, October and November

9.30a.m.

Bowden Kirk

Sunday 27th November

11.00a.m.

Melrose Parish Church

Calendar of Events

Services will be conducted by Rev. Bruce McNicol unless otherwise stated

Sunday 4 th September	9.30a.m.	Morning Worship, Bowden <i>Very Rev. Dr. Finlay Macdonald</i>
	11.00a.m.	Morning Worship, Melrose <i>Very Rev. Dr. Finlay Macdonald</i>
Sunday 11 th September	9.30a.m.	Morning Worship, Bowden <i>Very Rev. Dr. Finlay Macdonald</i>
	11.00a.m.	Morning Worship, Melrose <i>Very Rev. Dr. Finlay Macdonald</i>
Tuesday 13 th September	10.30a.m.	Priorwood Court Coffee Morning
Wednesday 14 th September	11.00a.m.	Bowden Community Café
Sunday 18 th September	9.30a.m.	Morning Worship, Bowden <i>Very Rev. David Arnott</i>
	11.00a.m.	Morning Worship, Melrose <i>Very Rev. David Arnott</i>
Tuesday 20 th September	2.00p.m.	Songs of Praise, St Johns
Saturday 24 th September	9.00a.m.	Monksford Golf Day
Sunday 25 th September	9.30a.m.	Morning Worship, Bowden <i>Sacrament of Holy Communion</i> <i>Rev. Dr. John Smith</i>
	11.00a.m.	Morning Worship, Melrose <i>Rev. Dr. John Smith</i>
Wednesday 28 th September	11.45a.m.	Mid-Week Worship in the Chapel
	12.15p.m.	Mid-Week Lunch
Sunday 2 nd October	9.30a.m.	Morning Worship, Bowden <i>Rev. Brian Embleton</i>
	10.00a.m.	Family Service, Melrose
	11.00a.m.	Morning Worship, Melrose
Tuesday 4 th October	7.30p.m.	Presentation to Jim Marshall
Thursday 6 th October	2.30p.m.	Guild Dedication Service and Sacrament of Holy Communion <i>Rev. Bruce McNicol</i>
Sunday 9 th October	9.30a.m.	Morning Worship, Bowden <i>Service of Harvest Thanksgiving</i>
	11.00a.m.	Morning Worship, Melrose <i>Service of Harvest Thanksgiving and Harvest Lunch</i>
Tuesday 10 th October	10.30a.m.	Priorwood Court Coffee Morning
Sunday 16 th October	9.30a.m.	Morning Worship, Bowden
	11.00a.m.	Morning Worship, Melrose
Tuesday 18 th October	2.00p.m.	Songs of Praise, St John's
Wednesday 19 th October	11.00a.m.	Bowden Community Café
Thursday 20 th October	2.30p.m.	Guild
Sunday 23 rd October	9.30a.m.	Morning Worship, Bowden <i>Very Rev. David Arnott</i>
	11.00a.m.	Morning Worship, Melrose <i>Very Rev. David Arnott</i>
Wednesday 26 th October	11.45a.m.	Mid-week Worship in the Chapel
	12.15p.m.	Mid-week Lunch

Sunday 30 th October	9.30a.m.	Morning Worship, Bowden <i>Sacrament of Holy Communion</i>
	11.00a.m.	Morning Worship, Melrose
Thursday 3 rd November	2.30p.m.	Guild
Friday 4 th November	3.00p.m.– 7.00p.m.	Traidcraft Christmas Sale
Saturday 5 th November	10.00a.m.– 1.00p.m.	Traidcraft Christmas Sale
Sunday 6 th November	9.30a.m.	Morning Worship, Bowden <i>Very Rev. David Arnott</i>
	10.00a.m.	Family Service
	11.00a.m.	Morning Worship, Melrose
Tuesday 8 th November	10.30a.m.	Priorwood Court Coffee Morning
Sunday 13 th November	9.15a.m.	Gattonside Service of Remembrance
<i>Remembrance Sunday</i>	9.30a.m.	Morning Worship, Bowden
	10.45a.m.	Wreaths Laid at Melrose War Memorial
	11.00a.m.	Ecumenical Service of Remembrance and Dedication of Roll of Honour
	3.00p.m.	Darnick Service of Remembrance
<i>Guild Week 13th – 20th November</i>		
Tuesday 15 th November	2.00p.m.	Songs of Praise, St John's
Wednesday 18 th November	11.00a.m.	Bowden Community Café
Thursday 19 th November	2.30p.m.	Guild
Sunday 20 th November	9.30a.m.	Morning Worship, Bowden
	11.00a.m.	Morning Worship, Melrose
Wednesday 23 rd November	11.45a.m.	Mid-week Worship in the Chapel
	12.15p.m.	Mid-week Lunch
Sunday 27 th November	9.30a.m.	Morning Worship, Bowden <i>Sacrament of Holy Communion</i>
<i>1st Sunday in Advent</i>	11.00a.m.	Morning Worship, Melrose <i>Sacrament of Holy Communion</i>
Sunday 4 th December	9.30a.m.	Morning Worship, Bowden
<i>2nd Sunday in Advent</i>	10.00a.m.	Family Service
	11.00a.m.	Morning Worship, Melrose <i>Very Rev. David Arnott</i>

Family Services

Sunday 10.00 – 10.30a.m. in Church Hall

Sunday 2nd October

Sunday 6th November

Sunday 4th December

We hope families will take these opportunities to involve young children in the life of the church and that the congregation in general will support these initiatives. We would also be delighted to hear from anyone who can help in any way.

PASTORAL CARE GROUP

Members of the group are involved in visiting members of the congregation and parish in their homes and in several care and nursing homes. In addition they are organising monthly coffee mornings in the lounge of Priorwood Court for residents and any others who would like to come along for tea or coffee, home baking and a chat. The dates are 13th September, 11th October and 8th November at 10.30a.m.

MID-WEEK LUNCH

There still appears to be a good number of people enjoying the mid-week lunches so here are the future dates:

Wednesday 28th September Margaret's team
Wednesday 26th October. Ruth/Veronica's team
Wednesday 23rd November. Kath's team

N.B. It seems ridiculous to mention Christmas now, but please note the date of the **Christmas Lunch as Wednesday 14th December**. This is the second Wednesday, but the usual third, is the 21st much too close to Christmas.

12. 15 to 1.30 lunch £3.50

There is a short Ecumenical Service at 11.45a.m. in the Chapel prior to the lunch for any who would like to attend.

Veronica Bailey.

HOME COMMUNION

We know that there are members of the Congregation who are no longer able to make it to the Church services. Rev. Bruce McNicol would like to offer home Communion to these people so if you are in this situation or know of someone who would appreciate this service, please contact either the Minister or the office.

FUNDRAISERS

Bowden and Melrose Fete

The annual August Fete was held in Bowden Village Hall and was an excellent and happy event, opened by Very Rev. David Arnott. £1,322 was raised for congregational funds. Thanks go to all involved in preparation, donations and helping on the day, as well as those who attended.

Monksford Golf Day

Places are still available for our fund raiser for our Special Projects at Monksford on Saturday 24th September by kind permission of Paul and Clare Rooney. Entries can be from individuals or teams of four (£25 per person). We hope to fill 9 morning (9.00a.m.) and 9 afternoon (2.00p.m.) times with refreshments and prize-giving in the evening. Contact the church office (01896 823339) or add your name (individual or team captain) to the list in the Gattonside porch, Melrose Parish Church or at the back of Bowden Kirk.

Guild News

BOWDEN AND MELROSE GUILD - SEPTEMBER 2016 Report.

Over the summer months, our Guild Secretaries have been busy compiling our programme for the coming season.

Three of us are hoping to attend the Guild Rally for Scotland on **Saturday 3rd September** in Dundee, and we would intend relating news from this large gathering to our Guild when we start on **Thursday 6th October**.

On the 6th at 2.30pm, Rev. Bruce McNicol will conduct our Dedication Service along with an informal Communion, followed by tea and cakes in the church hall, along with plenty chat, renewing acquaintances and meeting new friends. All present members and friends are very welcome to come (men included).

On Tuesday 11th October at 2.15 pm, in Trinity Church, Galashiels, the Autumn Rally of Melrose and Peebles Presbyterial Council will take the form of a Songs of Praise. We could sort out transport for anyone wishing to attend, at our opening meeting on the 6th.

Our Fundraising Project for this year is "Care for the Family" so our speaker on **20th October** is Hannah Reid, who will explain the need for this fundraiser. (Last year's Project of "Street Pastors" has already set up a presence in Galashiels, and intend to start in Hawick very shortly. Thank you to so many who contributed to this.) We mean to have two fundraisers over the year for "Care for the Family."

On **3rd November** Henry Borthwick is returning to give us more insight into the history of Soutra.

10th November we have an additional meeting when our Guild are hosting the other local Guilds to a meeting in our church hall, led by Iain Whyte, the Guild's General Secretary from 121 George Street. He is speaking regarding the Action Plan for Guilds going forward. It would be lovely to have a good presence from our own Guild to welcome everyone and participate in this meeting. We will finish the afternoon with us supplying the tea etc. for our visitors.

17th November will be the first of two fundraisers when we welcome Rev. Marion Dodd as our Speaker. We anticipate a good audience for Marion, so feel free to bring family and friends along. Marion is an excellent speaker, and following her talk, there will be special tea and cakes!

Having had three meetings in a row, our final meeting will be on **8th December** when we are planning to have our Christmas lunch (time and venue to be confirmed).

We continue to need contributions to the Food Bank. Sadly the need for this facility is not abating as there are still many locally existing on this charity, where finances have dwindled thanks to redundancies, pay reductions, and ill health. We will also be taking part in the Shoe Box Appeal through Blythswood, so start filling your boxes now – it will probably be late October or early November when they will be uplifted.

As you can see our Autumn term is very busy and varied. Do come and join us (membership is £12 for the year – what a bargain!) Details of our Spring meetings will appear in the next church magazine. All our meetings are at 2.30pm, and of course anyone is more than welcome to come to any of our meetings as a taster. For further information contact myself on 01896 752375.

Elizabeth Fraser, President.

FOOD BANK

Donations to the food bank have been coming in for a considerable time. The box in the Gattonside porch is emptied weekly. However, the need for contributions has not abated – indeed increased. The needs for many are by folk who have never hit hard times before, but due to redundancies, closing of businesses, ill health both physical and mental brought on by very difficult situations, all this and more, is proving a difficult time for many people locally. Suggested items for the Food Bank are cereals, tinned fruit, tinned meats, pasta sauces, tins or jars of jam and marmalade, UHT milk, tinned rice, tinned potatoes, tinned vegetables, tinned soups, small sachets of Smash potatoes, cooking oil, tea bags and coffee. Please make sure your contributions are well within “use by” date. It is hugely helpful to have items which require little or no cooking, as some recipients have either very restricted fuel or none. Thank you to all who have been helping with contributions, and thereafter sorting and distributing the food. Additional items of fresh food i.e. bread, eggs, butter etc. are purchased with cash donations and added to the packs. On behalf of all the recipients THANK YOU VERY MUCH.

Elizabeth Fraser.

Bowden and Melrose Harvest Thanksgivings and Lunch

These services will be held on
Sunday 9th October and a retiring offering will be taken for Christian Aid.

We would be grateful if you would use the response section on Page 15 of this magazine if you would like to join us for the Lunch. This would be useful for those in charge as it will give an idea of numbers for catering purposes. However, if you decide on the day, we'd be delighted to see you.

SONGS OF PRAISE AT ST. JOHN'S HOME:

Our Choir members coordinate these afternoons at St. John's Home, High Cross Avenue, Melrose, ***held on the 3rd Tuesday of each month at 2 pm.*** At present a small core of the Choir members support the singing, but more voices would be welcome. The residents enjoy singing well known hymns for about half an hour, followed by tea and baking. Do come to any or all of these musical afternoons, where the residents very much participate.

WORLD MISSION STAMP APPEAL

Grateful thanks have been received from The Church of Scotland's World Mission Council for the used stamps which have been sent to them to help to raise funds. These are used to help our partners world-wide and, in 2015, the amazing sum of £3,511 will be used to support the work of the Church of Scotland HIV Programme.

The 2016 Appeal is raising money for the Othara Eco-spirituality centre run by our partner, the Church of South India. The Church of South India (CSI) recently opened the Othara Eco-spirituality centre, where people can learn about climate change and the importance of conserving the earth. The Stamp Project will support some of their ecological innovations including the harvesting and re-use of rain water, the establishment of a biogas plant to power the kitchens and the development of a small dairy and chicken farm for native breeds. Through retreats and conferences, CSI hopes that the knowledge people gain at the centre will inspire them to live sustainably and encourage others in their community to do the same because “caring for the earth is not only a calling, but a lifestyle”. Bowden and Melrose Parish Church will support this appeal and ask that you save your used stamps and bring them along with you. There is a collecting box in the Gattonside porch at Melrose and at the back of the Kirk in Bowden.

You continue to provide the stamps and we'll do the rest. Thank you.

Members have all sorts of interests.....

Lindisfarne Archaeology:

Searching for St. Aidan's First Monastery

Lindisfarne has a very long archaeological heritage reaching back into the prehistoric era and extending to post-medieval and recent times. It is, however, most renowned for its associations with St. Aidan and King Oswald, the foundation of an early medieval Anglo-Saxon monastery in AD 635 and subsequently with St. Cuthbert and the Lindisfarne Gospels. The Peregrini Lindisfarne Community Archaeology Project, part of the HLF-funded Peregrini



Lindisfarne Landscape Partnership, is aiming to complete a range of archaeological investigations on Lindisfarne and the adjacent mainland during 2016 and 2017. Volunteers were invited to participate under the direction of the Archaeological Practice Ltd. of Newcastle-upon-Tyne.

The planned fieldwork for June 2016 included the evaluation of a series of small, shallow ruins of unknown date on the whinstone ridge of high

ground, known as the Heugh, extending from the south-west corner of the island, opposite St. Cuthbert's isle, to Osborne's fort and the pier on the west side of the harbour entrance. The aim was to establish the date of these structures and whether or not they are linked with the Anglo-Saxon or medieval monasteries. The outlines of these small ruins are only clearly visible in late spring when the height of the grass is at its lowest. They were first observed in the late 19th century by a casual visitor to the island, and at least one of them was excavated by Brian Hope-Taylor in the 1960s.

In his account of the death of Cuthbert, Bede makes explicit reference to a watchtower from which one of the Lindisfarne monks kept vigil for news of Cuthbert's death. When the saint died (on Inner Farne) those attending him lit two torches as a prearranged signal of his passing. From the Heugh there is an excellent line of sight to Inner Farne and it is possible that one of the small buildings served the function of a watchtower. Other structures on the Heugh may have served as small chapels or retreats, more in the pattern of a dispersed Irish-type of monastic complex. They may have been “stations”, shrines or stages in a circuit on the monastic precinct associated with a devotional ritual of pilgrimage, known in early Christian Ireland as a *turas*.



On 22nd June the archaeological team descended upon the Heugh to open the first trench towards the west end of the ridge. Team spirits were high despite the cold stormy weather. This excavation revealed the foundations of a massive 2.5m wide wall

constructed of roughly-cut facing stones laid on either side of closely-packed, deeply-set cobbles, with smaller cobbles forming an upper surface. There were no significant finds to provide evidence for dating, but the massive walls and form of this structure suggests that it may have been a tower. No evidence was unearthed to indicate that it was the tower described by Bede. Its absence from early maps and the lack of mortar in the structure, or from the immediate surroundings indicates that it is likely to be an ancient structure, perhaps pre-Norman in origin. Stone could have been robbed from this structure for incorporation into the later Norman church.

Trench number 2 was located a little further to the east. It revealed more building foundations, this time in the form of massive limestone blocks forming the base of a north-south wall between 1m. and 1.2 m wide, with an apparent narrower east-west return at the north end. Numerous smaller, squared stone blocks bearing crude chisel marks, showing that they had been shaped as building stones, were found in deposits above these foundation stones but there were no other finds to indicate their date of origin. However, the absence of mortar bonding material and documentary corroboration suggests that these foundations are of early origin. Only further excavations, planned for 2017, will confirm whether or not this building was a church and, hopefully, reveal evidence that can date the structure.

The third trench was located on the north-facing slope of the Heugh, just above the harbour. Results so far have been limited to a few sherds of medieval pottery and later material. Building remains are visible as earthworks and have now been located as targets for renewed investigations in this area.

Other sites proposed for investigation in 2017 include Osborne's fort at the east end of the Heugh and St. Cuthbert's Isle, the islet off the west end of the Heugh used by St. Cuthbert as a hermitage before he sought even greater isolation on Inner Farne. The parish Church of St. Mary will be subject to investigation and the recording of the surviving Pre-Norman masonry known to exist in the chancel arch and possibly robbed out of the earlier buildings on the Heugh.

Archaeology on Lindisfarne is certainly a challenge when the weather can throw all four seasons at you in one day. From the Heugh we had a clear view of the gathering clouds, squalls of rain, hailstones, thunder and lightning as they approached on the winds of fierce clouds. "*Nil desperandum*" digging for evidence of St. Aidan's monastic settlement on Lindisfarne was a superb experience. All targets for the 2016 digging season were successfully completed and we look forward to what we may discover in 2017.

Margaret Collin

Another local researcher, Rosemary Morrison, has come up with a snippet of history combining the Reform Act of 1832, the welcoming back of a WWI POW- and the Bowden Banner. The spellings are as in the original newspaper article.

Bowden

Welcome Home Of Lieut. Mcneile.

On November 19 [1918] the old Bowden flag was unfurled in honour of the home-coming, after four years' imprisonment and interment, of Lieut. McNeile, Coldstream Guards, of Kippilaw, only son of the late gallant Colonel of the 1st 4th King's Own Scottish Borderers, who gave his life for his country at Gallipoli in 1915. The banner bears on one side, painted in

brilliant colours and gold, the coat of Arms of the Kers, Dukes of Roxburghe, and on the other the coat of arms of the Seton-Kerrs of Kippilaw. *¹

Across it runs a long, neatly darned rent. The oldest inhabitant of Bowden, Mr George Thomson *², gives an interesting account of the origin of the banner. It was made by a man named Daniel Mackintosh *³, at Melrose, to celebrate the passing of the Reform Bill, and on July 17th 1832 it was carried in a procession to Holydean, the old seat of the Roxburgh family. "There was," says Mr Thomson, "a lot of people, and the men were decorated with sashes: I don't remember if any women were there: I was a bit laddie, 6 years old, running along with them to see the fun. They hoisted the flag up on the old castle wall at Holydean, but it caught on a projecting stone or branch and got badly torn. There was a tailor in the company, and he got a needle and mended it.

"Then we marched to Kippilaw and set it up. There was dancing on the green, and the old laird, Mr Karr *⁴, was watching us from an upper window, and he threw down a £1*⁵ note to the men, to pay for drinks."

Mr Thomson, who gives his reminiscences with the greatest freshness and vigour, is now in his 93rd year.... (*The Southern Reporter, Thursday December 5th 1918.*)

In 1922, the banner came into the possession of Bowden Village Hall Committee – the Hall having been opened twenty five years before by Henry Seton-Karr of Kippilaw, M.P., grandson of "the old Laird". There it remained for fifty years, rolled-up behind the hall platform. In the 1970s it was repaired, and passed onto Wilton Lodge Museum for safekeeping, and investigation into its origins. It is now held by the Heritage Hub at Hawick.

¹ The cotton flag measures seven feet by six feet. Above the Seton-Karr arms someone has added the inscription, "Friends of the Reform Bill 1832".

² Probably son of Robert Thomson, sawyer, Bowden – age 25 in 1851 census = age 6 in 1832

³ Probably Daniel Mackintosh, a painter in Melrose, age 65 in 1841 Census

⁴ Mr Andrew Seton-Karr, late of Bengal Civil Service. His grandson was Sir Henry Seton-Karr, M.P for St Helen's, who would later open Bowden Village Hall.

⁵ Equivalent to £83 in 2016

ARTHRITIS RESEARCH UK

The local group is holding A Musical Evening with a touch of dance on Friday 21st October in the Victoria Halls, Selkirk 7.00p.m for a 7.30p.m. start. The Hawick PSA Male Voice Choir with "The Langholm Lads" Iain and Eric, on the accordion and drums, will provide the entertainment. Tickets (£12.50 to include a light supper) are available by calling 07928 714 072 or book on-line at www.borderevents.com/boxoffice

FROM THE ASHES; THE PHOENIX SINGERS

Melrose Amateur Operatic Society went out in a blaze of glory some two years ago with a wonderfully inventive performance of The Mikado. However, the singing spirit is still alive and a new group has been formed called The Phoenix Singers to carry on - and broaden - the tradition.

Rehearsals begin on **Monday 17 October** in the Ormiston Lounge, Melrose, at 7.30pm for five consecutive weeks. It is hoped to have two concerts per year, the first being on **Saturday 19 November** in the Corn Exchange, Melrose. As many former members of the company as possible have been contacted - all are welcome.

The programme is to be arranged by the new Musical Director and the Chairman of the Group, Mr J Holmes Wilson. Much has to be done in the setting up of a new group. Further information will be available as soon as possible. Past patrons and audiences - and all interested in this widened venture - are asked to note the concert date of **Saturday 19 November** in their diaries.

PARISH REGISTER

Baptisms

10th July Martha Mary Cook, 10, Harleyburn Drive, Melrose

Weddings

11th June Rosemary Dobson and Scott Brown, 31 Springfield Terrace, St Boswells
16th July Siobhan Burke and David Still
24th July Joanne Wilson and Calum Macrae, Manor Cottage, Bowden
12th August Patience Nyathi and Itayi Mpofu, 35 Butler Drive, Erith Park, Erith, Kent
13th August Eilidh Adamson and John Spiinget, 25 Beatlie Road, Winchburgh
20th August Amy Falconer and Sean Johnston, 33 The Beeches, Tweedbank

Funerals

27th May Charles Ness, Charlesfield Place, Darnick
9th June James Stark, Ashgrove, Dingleton Road, Melrose
5th July Ruth Bannister, Galahill House, Galashiels
19th July Colin Hood, 1 Rowan Brae, Kelso
4th August Thomas Russell, Hassendean, Bakers Road, Gattonside
25th August Margaret Grainger, 10 Brock Bank, Tweedbank (Formerly Dingleton Road)

Elders on Duty – Melrose

Sept	4 th	11.00a.m.	Robin Cochrane	John Butcher
	11 th	11.00a.m.	Ishbel Gordon	John Pollitt
	18 th	11.00a.m.	Irene Armstrong	Colin Armstrong
	25 th	11.00a.m.	John Henderson	Ogilvie Mathieson
Oct	2 nd	11.00a.m.	Jim Thom	Mac Brown
	9 th	11.00a.m.	John Gaddie	Veronica Bailey
	16 th	11.00a.m.	Russell Sanderson	Robin Sloan
	23 rd	11.00a.m.	Murray Thom	Robbie Brown
	30 th	11.00a.m.	George Bunyan	James McCulloch
Nov	6 th	11.00a.m.	Martin Baird	Pat MacKenzie
	13 th	11.00a.m.	Richard Gordon	Ian Purves
	20 th	11.00a.m.	Owen Rowlands	Alastair O'Neil
	27 th	11.00a.m.	<i>Holy Communion</i>	
Dec	4 th	11.00a.m.	Elsa Barker	Roger Wardman
	11 th	11.00a.m.	Jim Letham	Walter Riddell-Carre

Elders on Duty – Bowden

Sept	4 th	9.30a.m.	John Henderson	Angus McLay
	11 th	9.30a.m.	Esther Crawford	Ian Forsyth
	18 th	9.30a.m.	William Windram	James McCulloch
	25 th	9.30a.m.	Irene Armstrong	Allan Cumming
			Murray Thom	John Gaddie
<i>Holy Communion</i>				
Oct	2 nd	9.30a.m.	Malcolm Morrison	Richard Gordon
	9 th	9.30a.m.	Ishbel Gordon	Pat Schmidt

	16 th	9.30a.m.	Ogilvie Mathieson	Roger Wardman
	23 rd	9.30a.m.	John Pollitt	Jim Thom
	30 th	9.30a.m.	Irene Armstrong	Colin Armstrong
	Holy Communion		Walter Riddell-Carre	Moreen Gordon
Nov	6 th	9.30a.m.	Robin Cochrane	Alison Bacon
	13 th	9.30a.m.	Robbie Brown	Alastair O'Neil
	20 th	9.30a.m.	John Gaddie	Pat MacKenzie
	27 th	9.30a.m.	Irene Armstrong	Russell Sanderson
	Holy Communion		Malcolm Morrison	Richard Gordon
Dec	4 th	9.30a.m.	Ian Purves	Owen Rowlands
	11 th	9.30a.m.	Colin Armstrong	Gilmour Forrest

Elders unable to undertake duty on the date allocated are personally responsible for arranging a substitute. They are asked to advise the office of the change by first thing on the previous Friday morning so that the names in the Orders of Service are accurate.

Beadle Duty – Bowden

Sept.	Bill Wilkie	Oct.	Hans Schmidt
Nov.	Ken Swinton	Dec.	Liz Sanderson

DOOR DUTY ROTA

Date	Name	Name
Sept 4 th	Lorna Hutchison	Gillian Arbuckle
11 th	Emma King	Liz Mitchell
18 th	Meg Robbie	Lyn Bryce
25 th	Kathleen Henderson	Hilary Ford
Oct 2 th	Ian Millar	Gail Creamer
9 th	Eleanor Connachie	Ruth MacDonnell
16 th	Kerry Clark	Lorna Masson
23 rd	Margaret Lang	Irene Thom
30 th	Sarah Craig	Wendy Scott
Nov 6 th	Sheila Millar	Eleanor Palmer
13 th	John McLaren	Kath McLaren
20 th	Gill Howard	Pam Rowlands
27 th	Val Miller	John Miller
Dec 4 th	Eleanor Johnstone	Tommy Wilson
11 th	Oliver Eade	Yvonne Eade

If you are unable to undertake your allocated duty please try to arrange for another rota member to cover and then advise the office of this change so that the names in the Orders of Service are accurate.

We are always looking for new volunteers for Door Duty so please contact the Office (01896 823339) if you are willing to help.

HARVEST LUNCH SUNDAY 9TH OCTOBER FOLLOWING WORSHIP

(Please return this slip to the Church Office or e-mail your intention to bowden.melrosepc@btinternet.com or phone 01896 823339)

The undernoted will be attending the above lunch:-

.....

Versifying is another of our members' talents. Herewith some verses of a self-styled 'doggerel poem inspired by speech therapy'

*Saucy Susan seeks a spouse, His name is Stephen surely
But he's so shy, just like a mouse, And Sue is quite unruly*

*The fateful hour is very near When wedding bliss should start;
But where is Steve? He should be here, and ne'er from Sue depart*

*The Best Man, Tom, he has no clue And looks so very glum.
No sign of Steve at rendezvous. He says 'He'll never come'*

A Search Party Goes Out

*They reached Steve's cottage in a trice; Oh, what a lad for schemes!
His feet were in a bucket of ice, He'd got 'cold feet', it seems*

**The copyright of each article in this magazine is vested in the author.
Permission to reproduce must be sought from the Editor.**